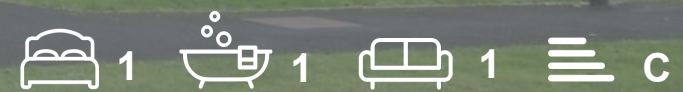




19 Rena Hobson Court
, TIVERTON, EX16 4QA

Asking Price £78,000



19 Rena Hobson Court, TIVERTON, EX16 4QA

The property is pleasantly situated on the second floor of this development of purpose-built flats, quietly tucked away from passing traffic on the eastern outskirts of the town. There is a parade of shops, within just a few hundred yards, together with a bus stop providing a regular daily service into the town centre (about one mile distant) with its wide range of shopping and recreational facilities, etc. The flat itself is in need of modernization throughout but offers spacious accommodation with an entrance hall, lounge/diner that is open plan through to the kitchen area, double bedroom and a bathroom. The building is accessed with a large communal hall with stairs leading to the second floor and the communal grounds are well maintained while offering plenty of space for off road parking. The property has been priced for a quick sale and needs to be viewed to avoid disappointment.



COMMUNAL ENTRANCE HALL

SECOND FLOOR LANDING

ENTRANCE HALL

10'3" x 2'10" (3.12m x 0.86m)

LOUNGE/DINER

13'7" x 9'10" (4.14m x 3.00m)

KITCHEN

9'10" x 5'10" (3.00m x 1.78m)

BEDROOM

10'6" x 9'7" (3.20m x 2.92m)

BATHROOM

5'7" x 6'6" (1.70m x 1.98m)

EXTERNAL

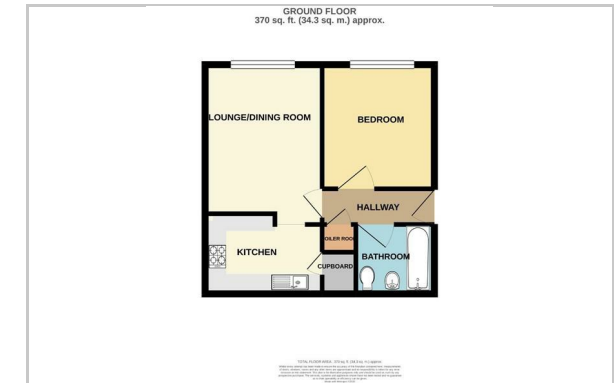
LEASEHOLD INFORMATION

Agents Declaration

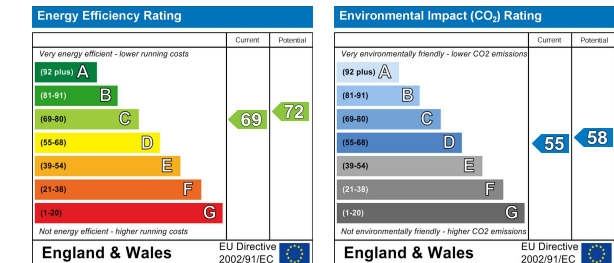
Area Map



Floor Plan



Energy Efficiency Graph



These particulars, whilst believed to be accurate are set out as a general outline only for guidance and do not constitute any part of an offer or contract. Intending purchasers should not rely on them as statements of representation of fact, but must satisfy themselves by inspection or otherwise as to their accuracy. No person in this firm's employment has the authority to make or give any representation or warranty in respect of the property.